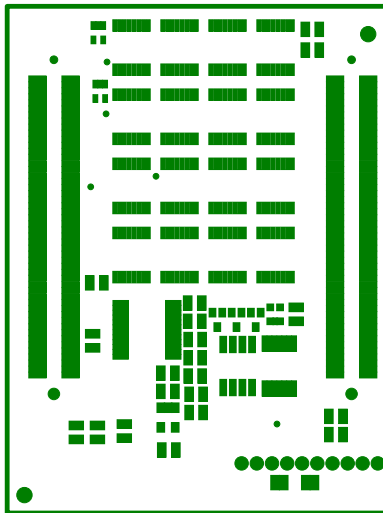

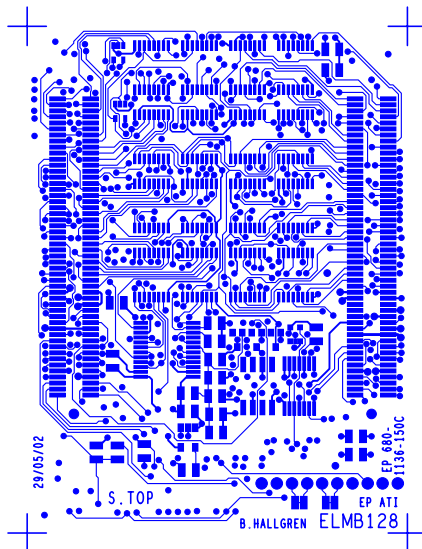
 ECP/PES	EP 680-1136-150		INDICE	NBRE DE COUCHE : 6
	DESS	STRINDEL EF	C	EP. DU CUIVRE : 35u
	DATE	29/11/00		EP. DU CIRCUIT : 10/10e
				MATIERE DU CI : EPOXY



ETM


LAQUE ARRET DE SOUDURE C-SIDE

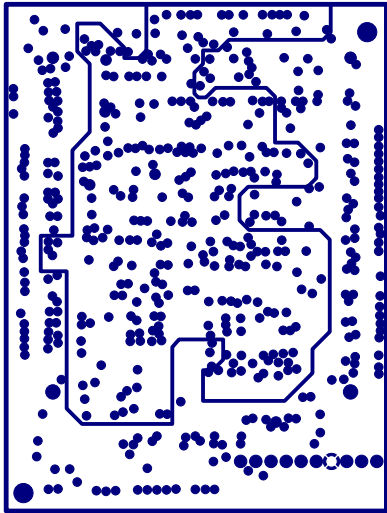
 ECP/PES	EP 680-1136-150		INDICE C	NBRE DE COUCHE : 6
	DESS	STRINDEL EF		EP. DU CUIVRE : 35u
	DATE	29/11/00		EP. DU CIRCUIT : 10/10e
				MATIERE DU CI : EPOXY



1

FACE COMPOSANTS

 ECP/PES	EP 680-1136-150		INDICE	NBRE DE COUCHE : 6
	DESS	STRINDEL EF	C	EP. DU CUIVRE : 35u
	DATE	29/11/00		EP. DU CIRCUIT : 10/10e
				MATIERE DU CI : EPOXY



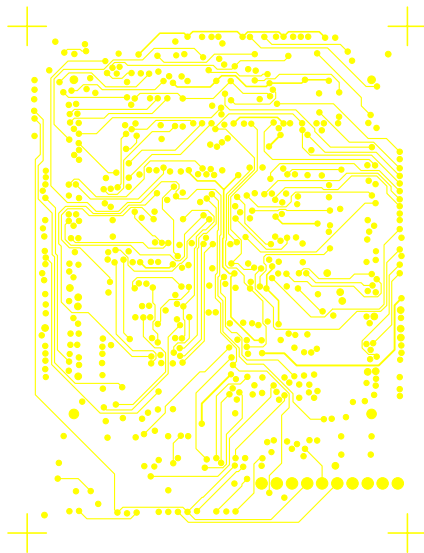
2

GND & AGND

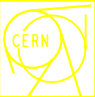
DATE	201100	MATIERE DU CI	EPOXY
DESIGNER	STRINDEL EF	EP. DU CIRCUIT	10\10e
INDEX	C	EP. DU CUIVRE	35u
	EP 080-1130-120	NBRE DE COUCHE	0

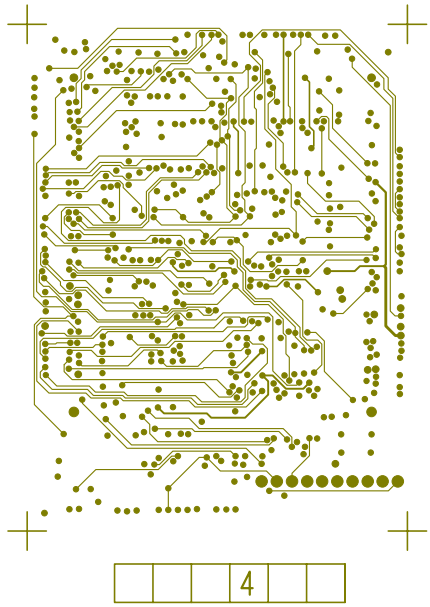


FCP\PE2




SIGNAUX L3

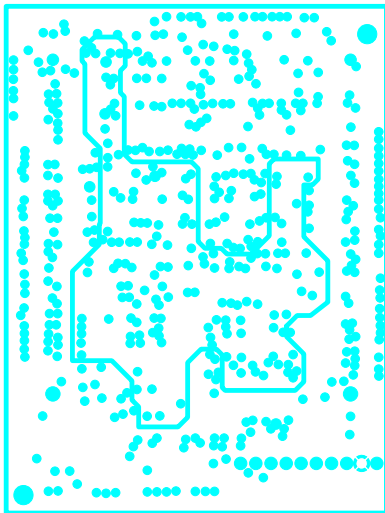
 ECP/PES	EP 680-1136-150		INDICE C	NBRE DE COUCHE : 6
	DESS	STRINDEL EF		EP. DU CUIVRE : 35u
	DATE	29/11/00		EP. DU CIRCUIT : 10/10e
				MATIERE DU CI : EPOXY



CONCOURS SIGNAL 4


DATE		201100	
DESIGN		STRINDEL EF	
MATERIE DU CI		EPOXY	
EP. DU CIRCUIT		10\10e	
EP. DU CUIVRE		35u	
NBR DE CONCOURS		0	
INDICE		C	
EP 080-1130-120			

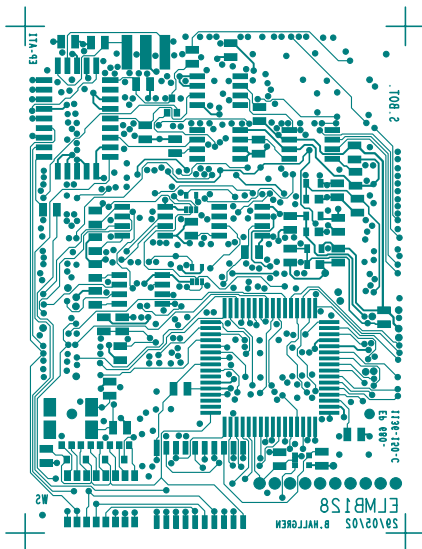
PCB\PE2



□ □ □ □ 5 □


COUCHE 5 P5VA & P3V3

 ECP/PES	EP 680-1136-150		INDICE	NBRE DE COUCHE : 6
	DESS	STRINDEL EF	C	EP. DU CUIVRE : 35u
	DATE	29/11/00		EP. DU CIRCUIT : 10/10e
				MATIERE DU CI : EPOXY

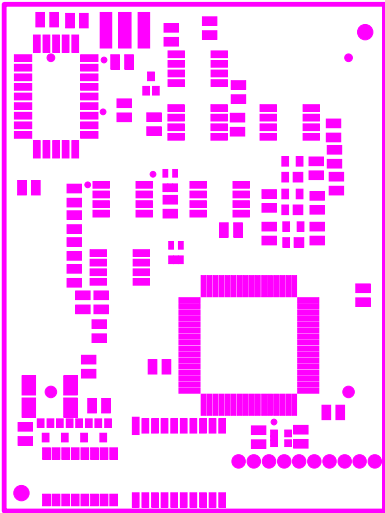


9

FACE SONDRE2

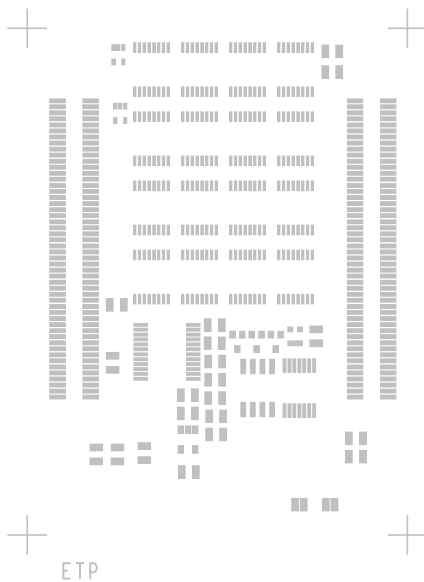
DATE	S&P1100	CERN	
DESS	STRINDEL EF		
MATIERE DU CI	: EPOXY		
EP. DU CIRCUIT	: 10\10e		
EP. DU CUIVRE	: 35u		
NBRE DE COUCHE	: 8	INDICE	C

ECV\PE2

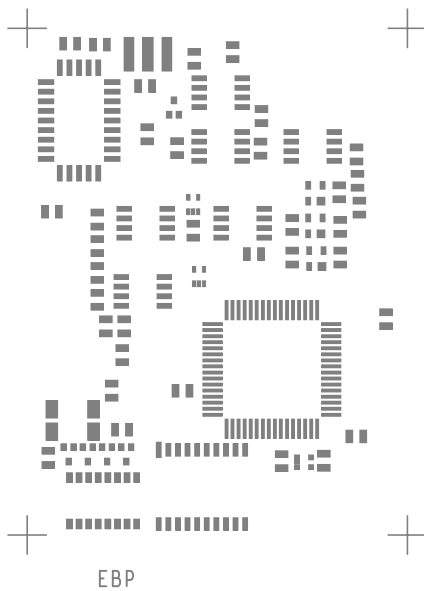



EBM

LAQUE ARRET DE SONDURE W-SIDE



 ECP/PES	EP 680-1136-150		INDICE C	NBRE DE COUCHE : 6
	DESS	STRINDEL EF		EP. DU CUIVRE : 35u
	DATE	29/11/00		EP. DU CIRCUIT : 10/10e
				MATIERE DU CI : EPOXY



DATE		201100	
DESS		STRINDEL EF	
MATERIE DU CI		EPOXY	
EP. DU CIRCUIT		10\10e	
EP. DU CUIVRE		35u	
NBR DE COUCHE		8	
INDICE		C	
EP 080-1130-120			



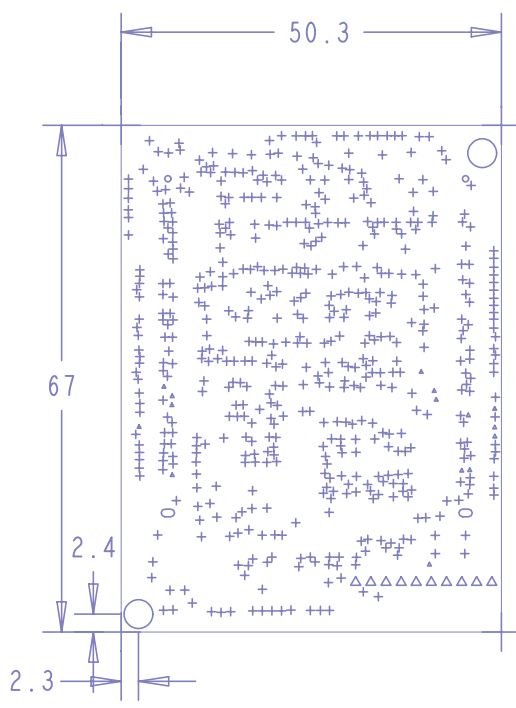



TABLE DES PERCAGES			
ALL UNITS ARE IN MILS			
FIGURE	DIA	METAL	QTE
+	12.0	PLATED	556
^	20.0	PLATED	15
△	36.0	PLATED	10
○	32.0	NON-PLATED	2
○	47.0	NON-PLATED	2
○	79.0	NON-PLATED	2

 ECP/PES	EP 680-1136-150	INDICE C	NBRE DE COUCHE : 6
	DESS STRINDEL EF		EP. DU CUIVRE : 35u
	DATE 29/11/00		EP. DU CIRCUIT : 10/10e
			MATIERE DU CI : EPOXY