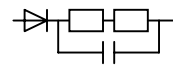
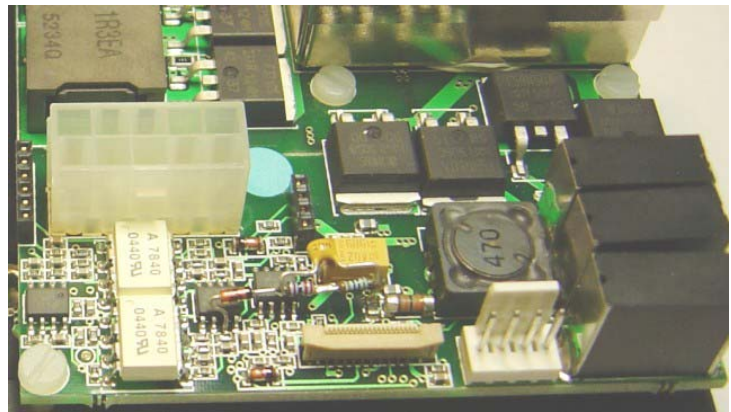


Diode L4448, Resistor (R1, or R1 and R2 in series), and capacitor C 100nF.

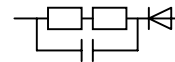
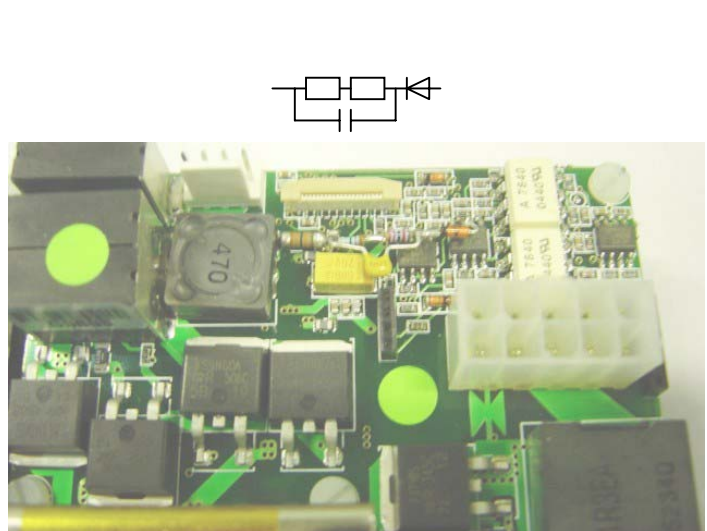
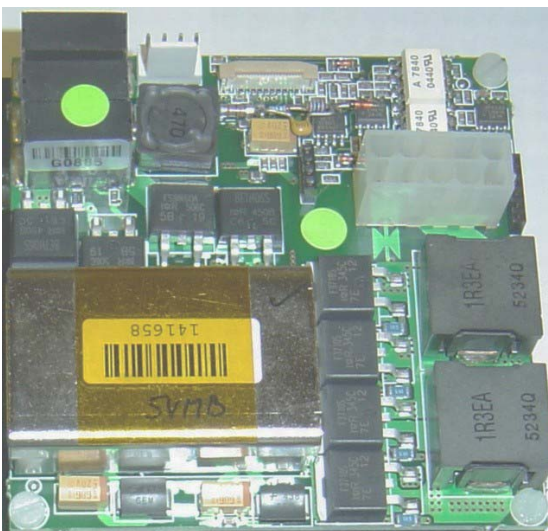


3V bricks [BLUE DOT ●] TO ADD ONLY DRC circuit (D + R1=22k + R2 =1k) and C=100nF



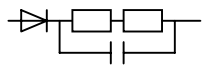
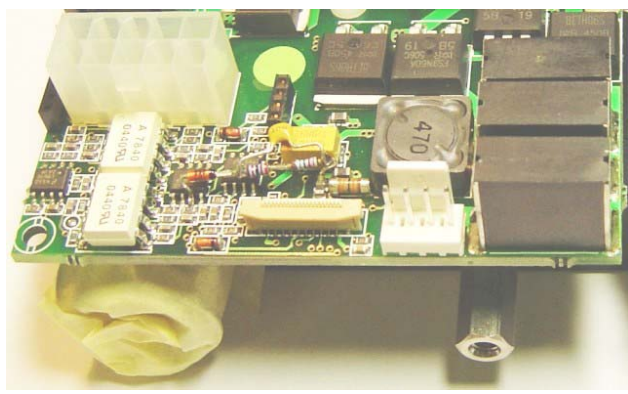
Brick is mounted on the black heatsink

5V MB bricks [TWO GREEN DOTS ●●] TO ADD ONLY DRC circuit (D + R1=22k + R2 =3k3) and C=100nF



Brick is mounted on the black heatsink

5V DIG bricks [GREEN DOT ] TO ADD OLNLY DRC circuit (D + R1=22k + R2=2k2) and C=100nF

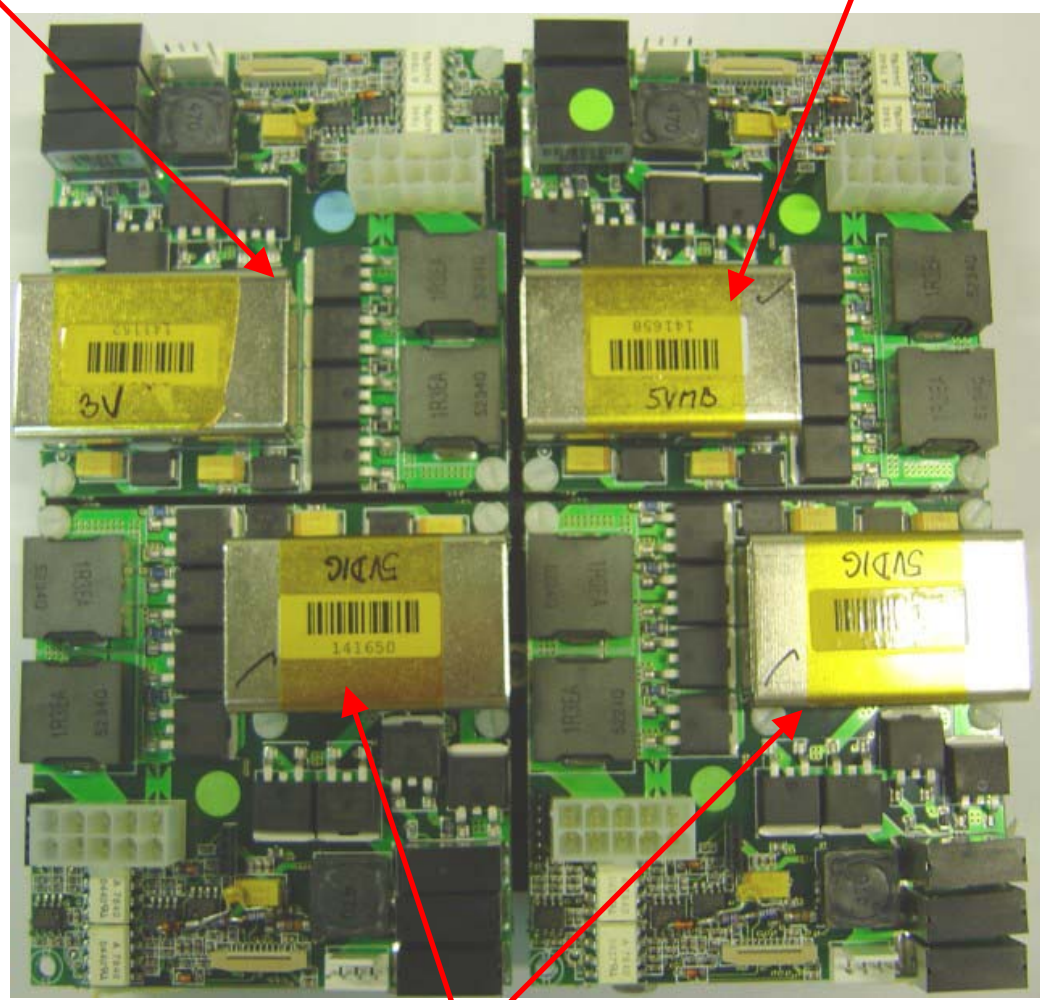


Brick is mounted on the black heatsink.

4bricks mounted on a heatsink

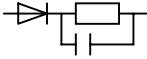
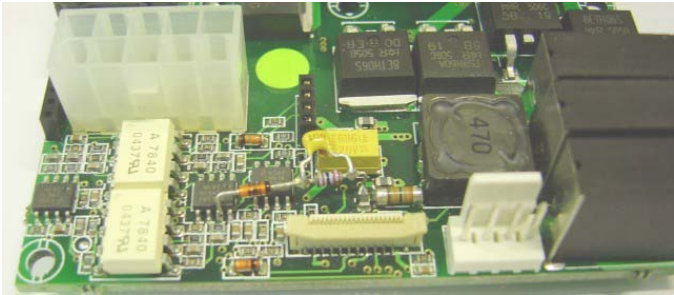
3V brick

5VMB brick



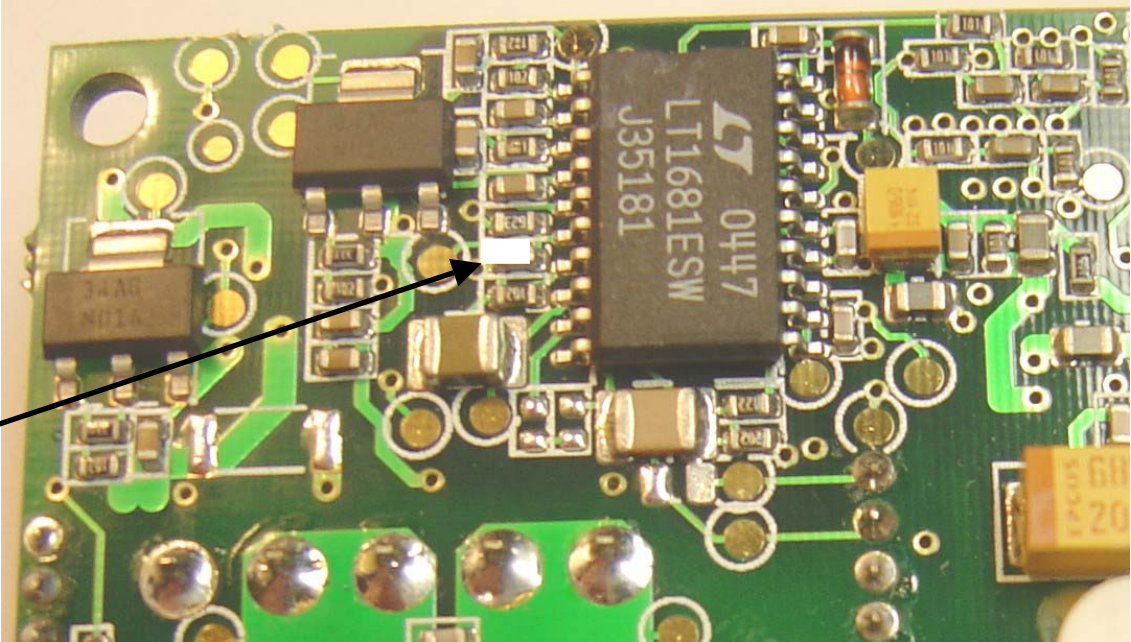
2x 5VDIG bricks

5V HV brick [GREEN DOT] TO ADD DRC circuit (D + R1=22k) and C=100nF AND CHANGE SMD Capacitor 47pF for 150pF on the back side



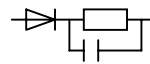
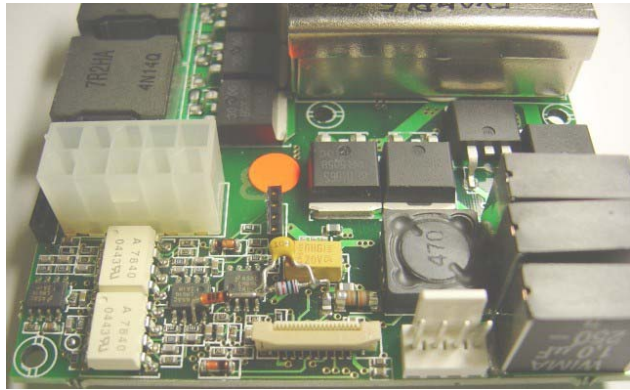
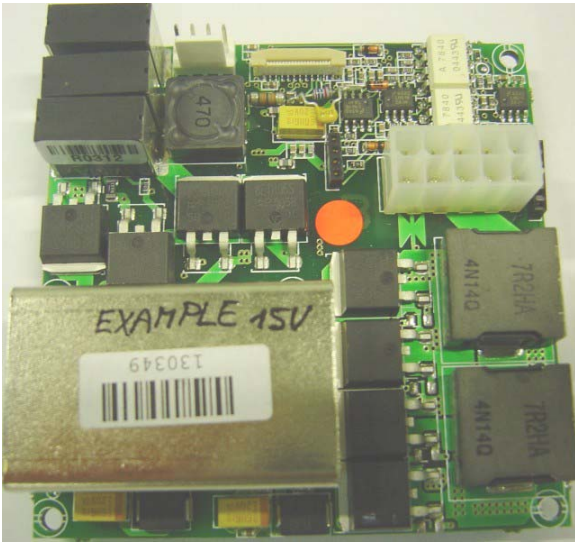
TOP side photos

Back side photo



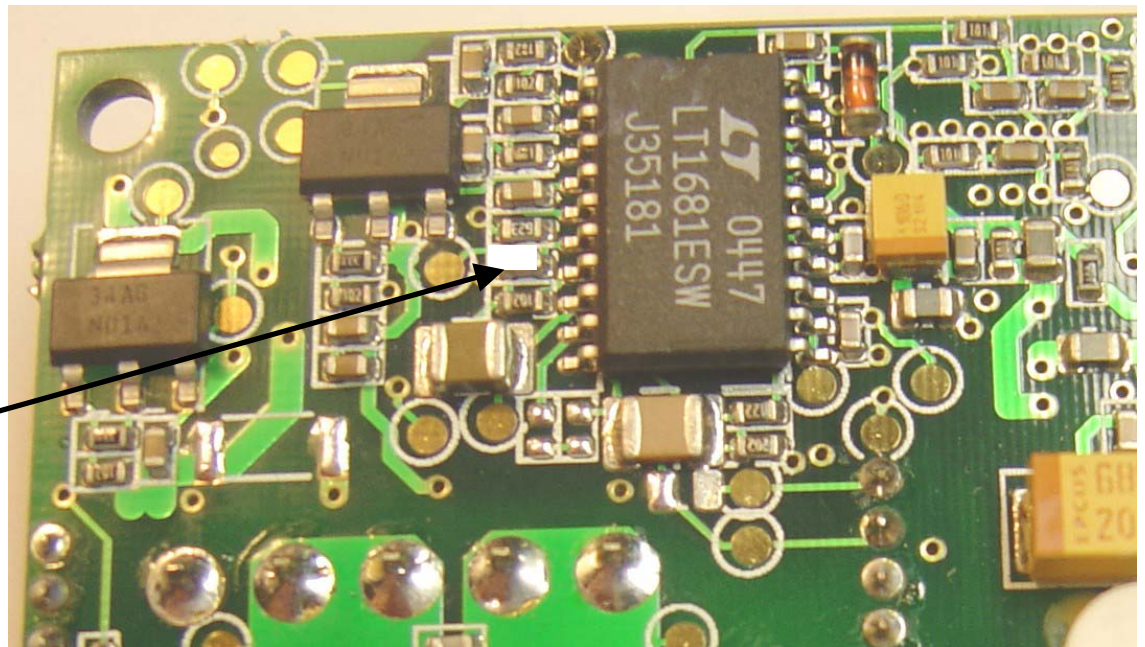
Change SMD Cap 47pF For 150pF

15V bricks [RED DOT ●] TO ADD DRC circuit (D + R1=20k) and C=100nF AND CHANGE SMD Capacitor 47pF for 150pF on the back side



Topside photos

Back side photo



Change SMD Cap 47pF For 150pF