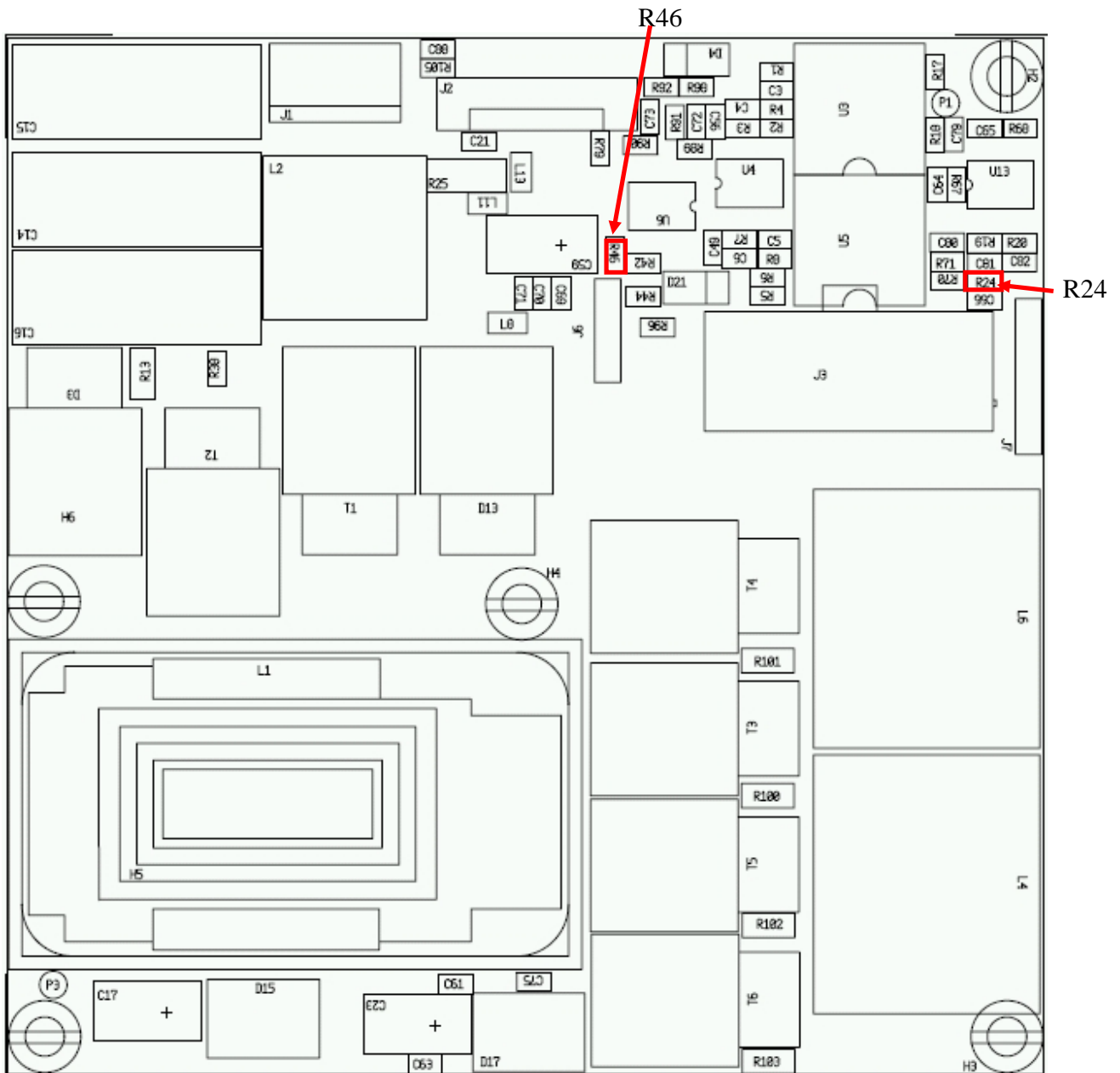


Modifications of 5V bricks v6.5 into 3.3V versions and vice versa

B.Palan 14/05/2007

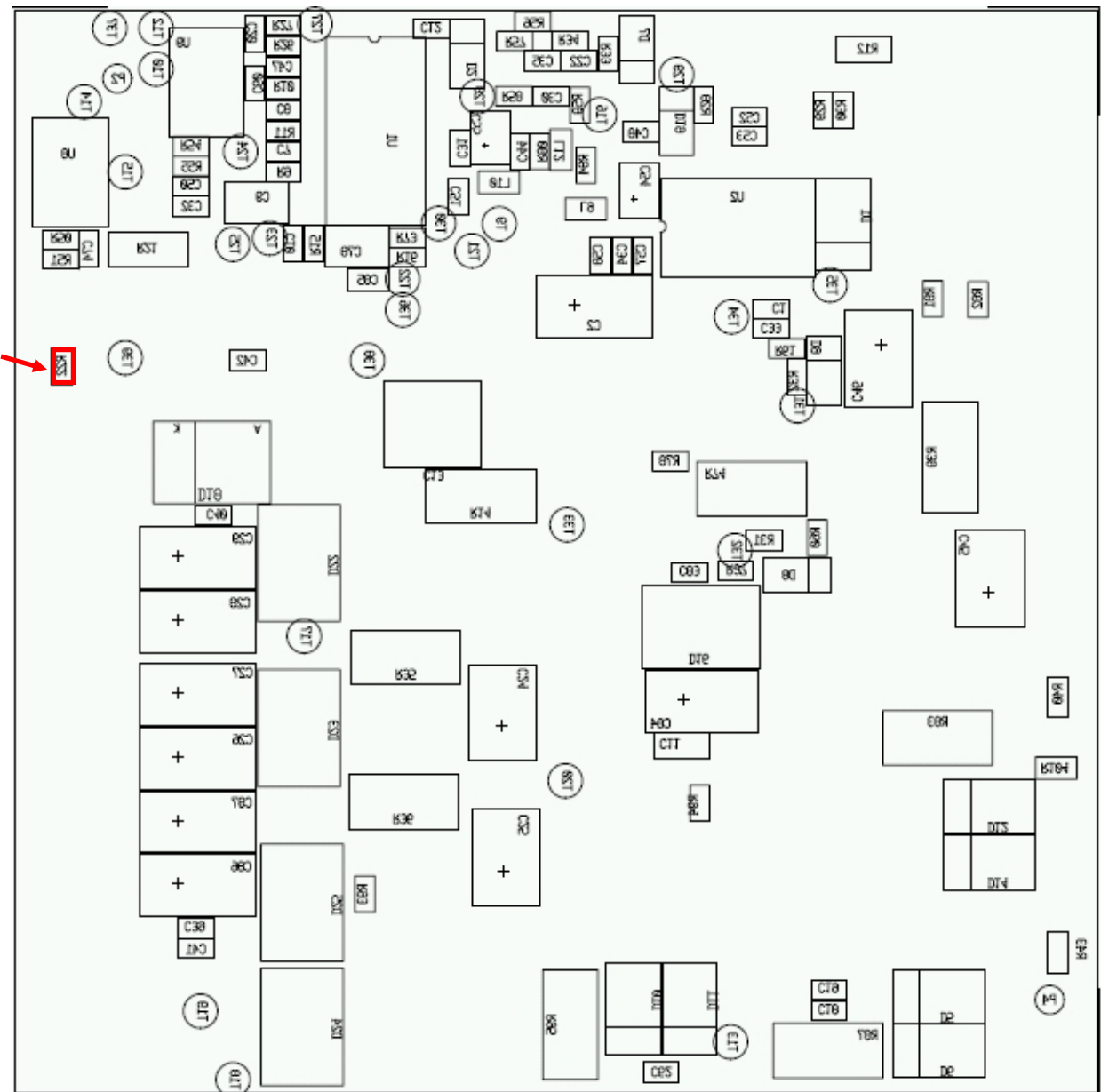
5V bricks and 3V bricks have 99% of components identical. The only difference is in the following three components: R46, R22, and R24. Changing these components will change the version of the brick.

Version	R46	R22	R24
3.3V	2k4 0603 1%	1k3 0603 1%	1k3 0603 1%
5V	3k0 0603 1%	2k0 0603 1%	2k0 0603 1%



Brick top pcb side view.

R22



Bottom pcb side view.